

# Filter systems for water softening CLARIS ULTRA



## Application areas

Water softening for drinking water systems:

- > Zip HydroTap® G4 BCS
- > Zip HydroTap® G4 BC
- > Zip HydroTap® G4 B
- > Zip HydroTap® MINIBOIL (incl. part no.: 84521)
- > Zip Hydroboil HBE 6-003..007
- > Zip Hydroboil KA15..40




# Filter systems for water softening

## CLARIS ULTRA

Questions about the product: +49 4131 8901-38



Filter > 	ULTRA 500	ULTRA 1000	ULTRA 2000
Filter head Universal [Part no.]:	84519		
Filter cartridge [Part no.]:	84500	84501	84502
Capacity 10°KH [litres]:	4.200	8.500	20.000
Required pressure [bar]:	2 – 8 / pressure resistant		
Flow rate [l/min]:	max. 1.9		
Inlet temperature [°C]:	4 – 30		
Dimensiones hight [cm]:	42.5	36	47.5
Dimensiones diameter [cm]:	9.5	13.6	17.5
<b>Water hardness (Carbonat hardness)</b>	<b>Capacity overview Filter Cartridges:</b>		
Capacity at 7°KH [litres]:	5.950	12.120	28.570
Capacity at 8°KH [litres]:	5.210	10.610	25.000
Capacity at 10°KH [litres]:	4.200	8.500	20.000
Capacity at 11°KH [litres]:	3.790	7.710	18.180
Capacity at 13°KH [litres]:	2.880	5.980	14.100
Capacity at 14°KH [litres]:	2.680	5.560	13.100
Capacity at 16°KH [litres]:	2.340	4.860	11.460
Capacity at 17°KH [litres]:	2.210	4.580	10.780
Capacity at 19°KH [litres]:	1.970	4.090	9.650
Capacity at 21°KH [litres]:	1.790	3.600	8.490
Capacity at 23°KH [litres]:	1.630	3.040	7.170

### Description

- > Three-level ion exchanger cartridges for softening, pH-stabilising and filtering of water for drinking water systems
- > Reduces minerals such as calcium and magnesium as well as chlorine and odours and flavours
- > The special filters are installed in the water inlet line before the boiling water heater system
- > Uses ion exchanger resins with pH value, the pH value stabilisation prevents excessive acid content
- > Stabilisation and active carbon from coconut shells with especially high capacity
- > In order to reach the appropriate water hardness, a small amount of the active carbon-filtered water bypasses the water softening stage
- > Reduces water hardness, which can lead to mineral deposits in boiling water heater systems
- > Hygienic and simple exchange of filter cartridges. Internal filter components are free from user contact or contamination.

### Additional recommendations

Exchange the filter cartridge when the calculated capacity has been reached, or at least once a year. The unit's performance is decreased if the recommended flow rate is exceeded. Always flush the cartridge after the initial installation or after a cartridge exchange. For the MINIBOIL and Hydroboil unit series (HBE 6-003..007 and KA 15..40) we recommend the CLARIS usage counter (part no.: 84509) with 3/8 inch thread as an optional accessory.

### Special Notes

CLARIS ULTRA offers an unmatched level of water hardness stabilisation with minimal effect on the water's pH value, based on the requirements of the European Drinking Water Ordinance. It is the first filter cartridge system worldwide that effectively combines hardness reduction, mineral stabilisation and corrosion prevention, in addition to cleaning the water and ensuring a controlled, low carbon dioxide level. The combination technology offers the best possible water quality across a wide range of hardness levels and reduces acid-induced metal migration (corrosion) of sensitive machine components.

# Filter systems for water softening

## CLARIS ULTRA

### Installation



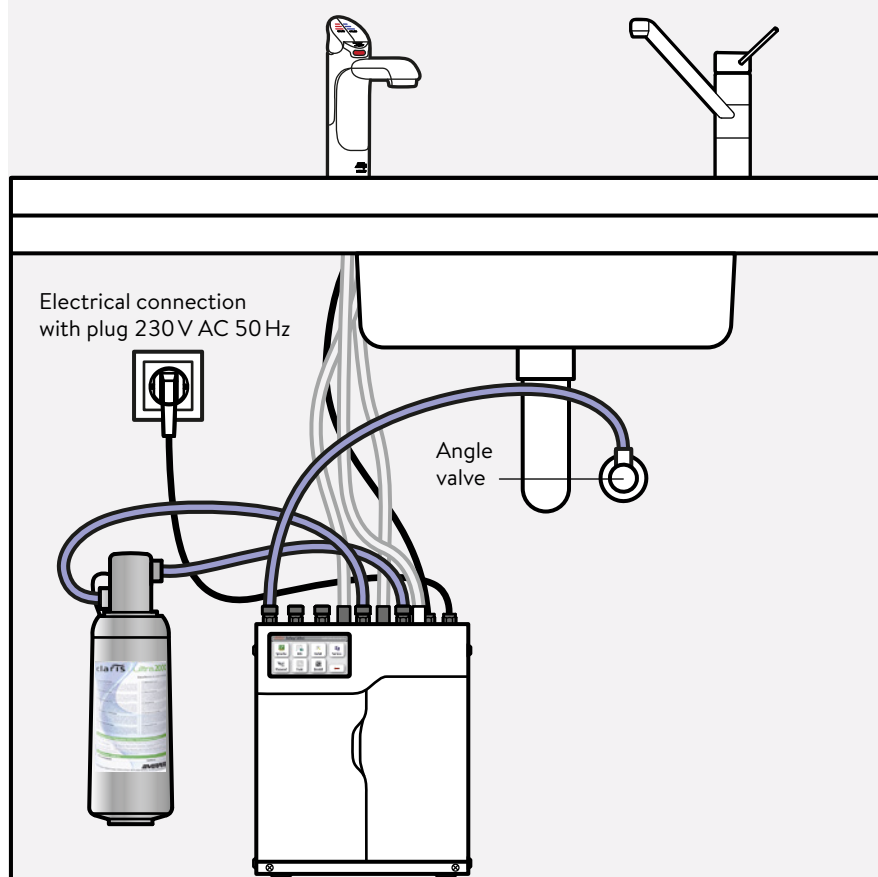
Please observe the differing dimensions of CLARIS ULTRA Filter (see table page 2).

A minimum distance of 10 cm upwards and downwards have to be kept.

Both installations – vertical and horizontal – are possible.

Example of an installation with Zip HydroTap® G4 BC

Assembly and operating instructions must be observed upon installation.



# Filter systems for water softening

## CLARIS ULTRA

### Accessories

---



#### **CLARIS Usage Counter** (optional for MINIBOIL and Hydroboil)

The CLARIS Flow Sensor with  $\frac{3}{8}$ " thread was developed especially for controlling filter cartridges and is intended to measure and display the remaining filter capacity until it is time to replace the filter. The user can obtain the following information from the external display:

- > Remaining capacity of a previously entered filtrate amount
- > Total filtrate amount
- > Retrieval of the filtrate amounts and service life of the last 5 filter cartridges

**CLARIS Usage Counter Kit:** Part no.: 84509



#### **Quick Connector Kit**

This accessory set is required for connection to the Zip models G3 and MINIBOIL.

**Quick Connector Kit:** Part no.: 84521